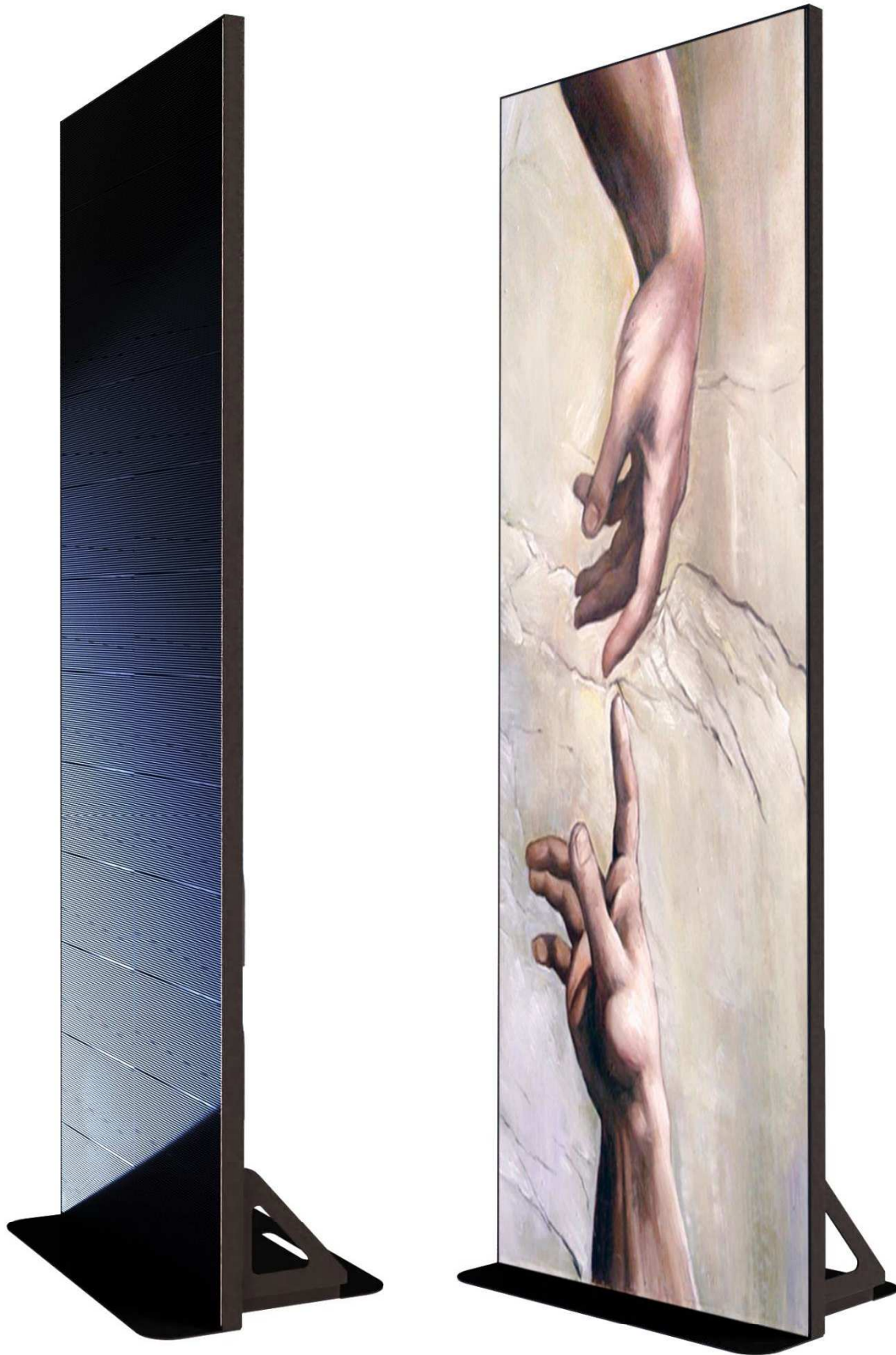


LEDUP - T6 SERIES

LEDUP

LEDECA
ALWAYS BRIGHT!

LEDUP -T6 SERIES



LEDUP

LEDECA
ALWAYS BRIGHT

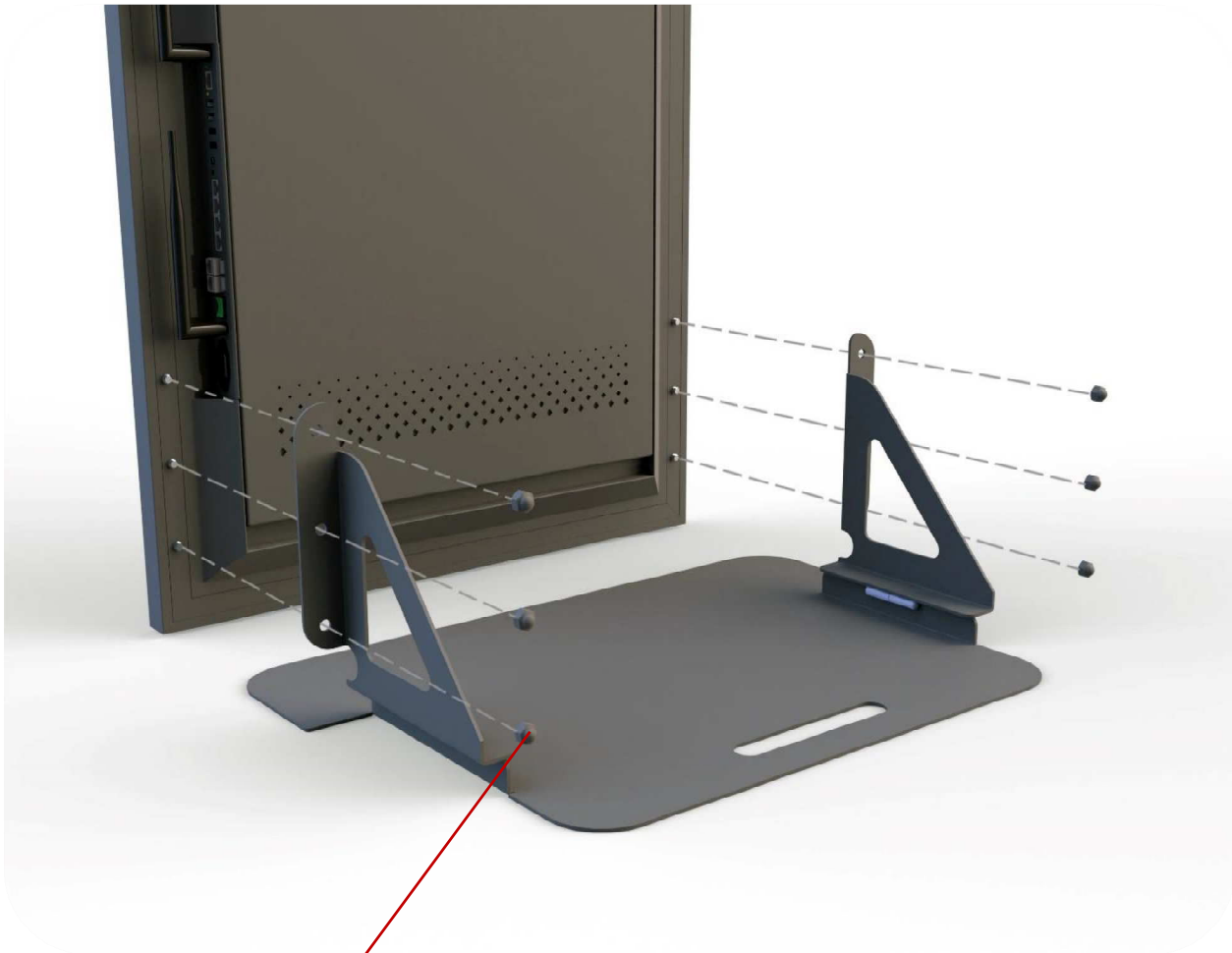
Installation / Base



BASE WILL BE READY TO INSTALLATION BY OPENING THE HINGES.



Installation

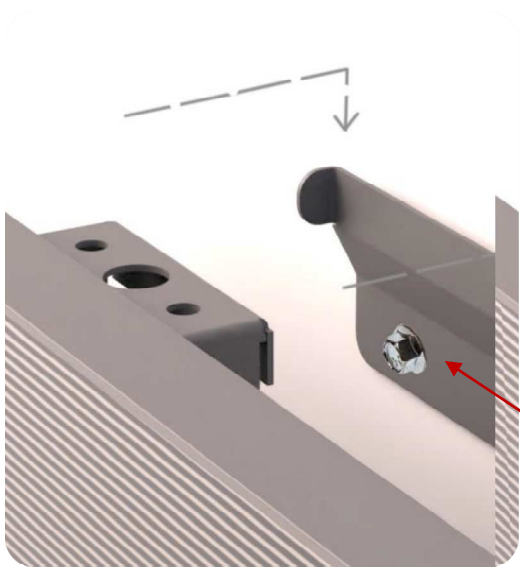
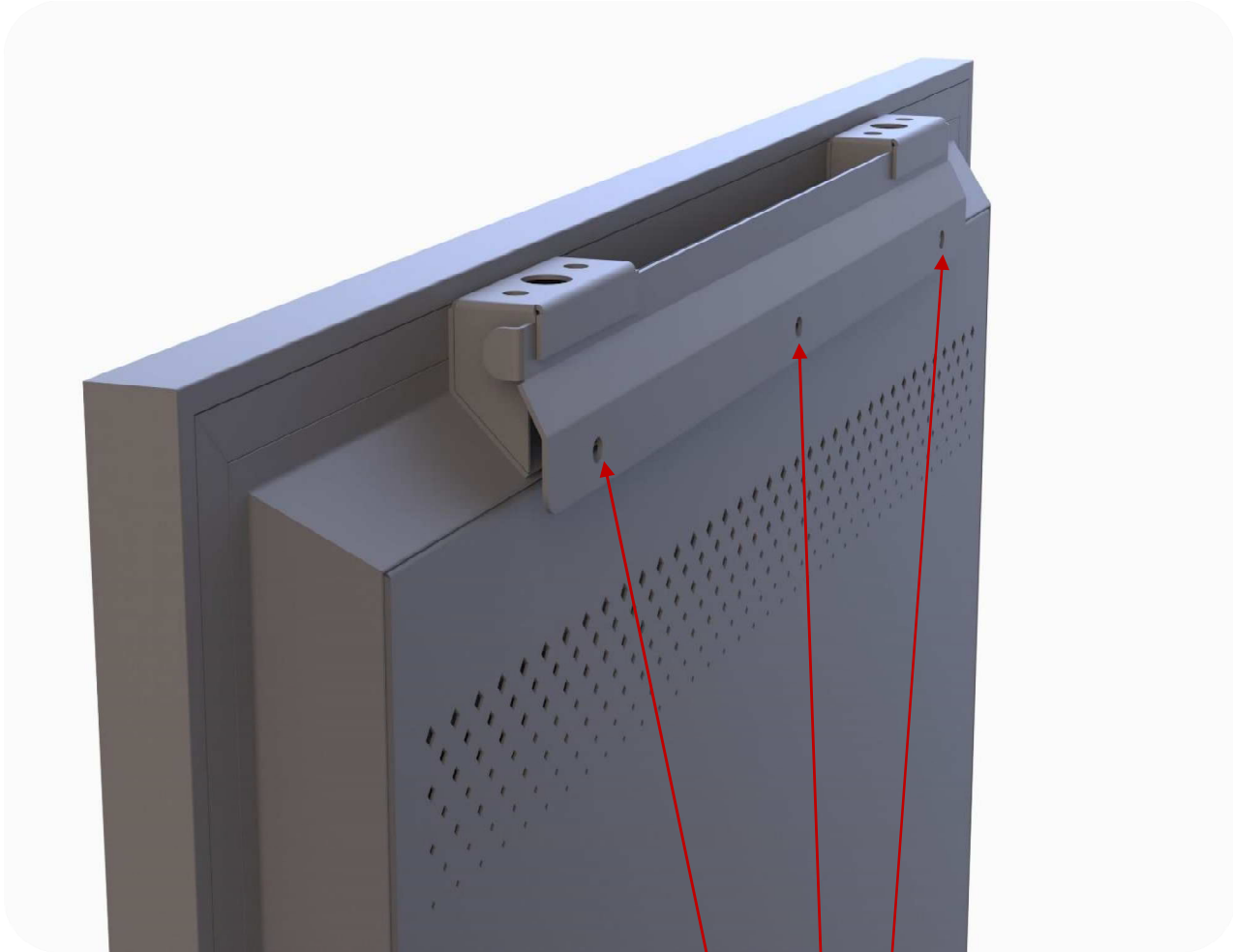


BASE WILL BE MOUNTED USING 6PCS M8 NUTS.



Installation / Wall Mount

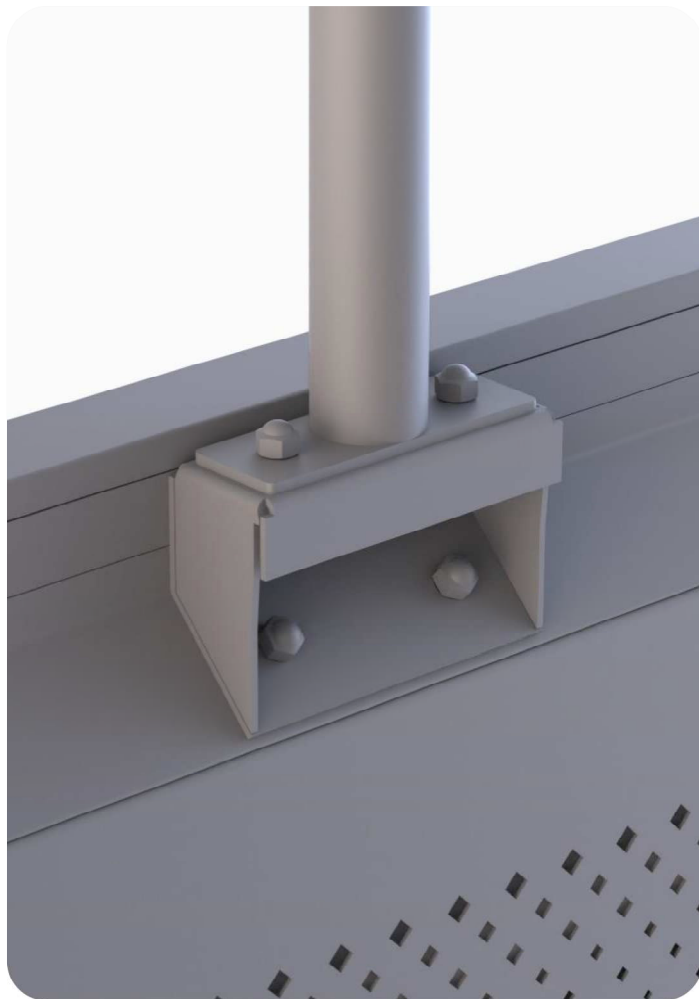
LEDUP



WALL MOUNT FIXTURE WILL BE INSTALLED TO THE WALL USING 3PCS M8X75 STEEL ANCHOR.
PRODUCT CAN BE HANG DIRECTLY TO THIS FIXTURE.

Installation / Ceiling Mount

HANGING PLATE WILL BE INSTALLED TO CEILING USING 4PCS M8X75 STEEL ANCHOR. HANGING POSITION CAN BE ADJUSTED VERTICALLY USING 3PCS M8 SCREWS.



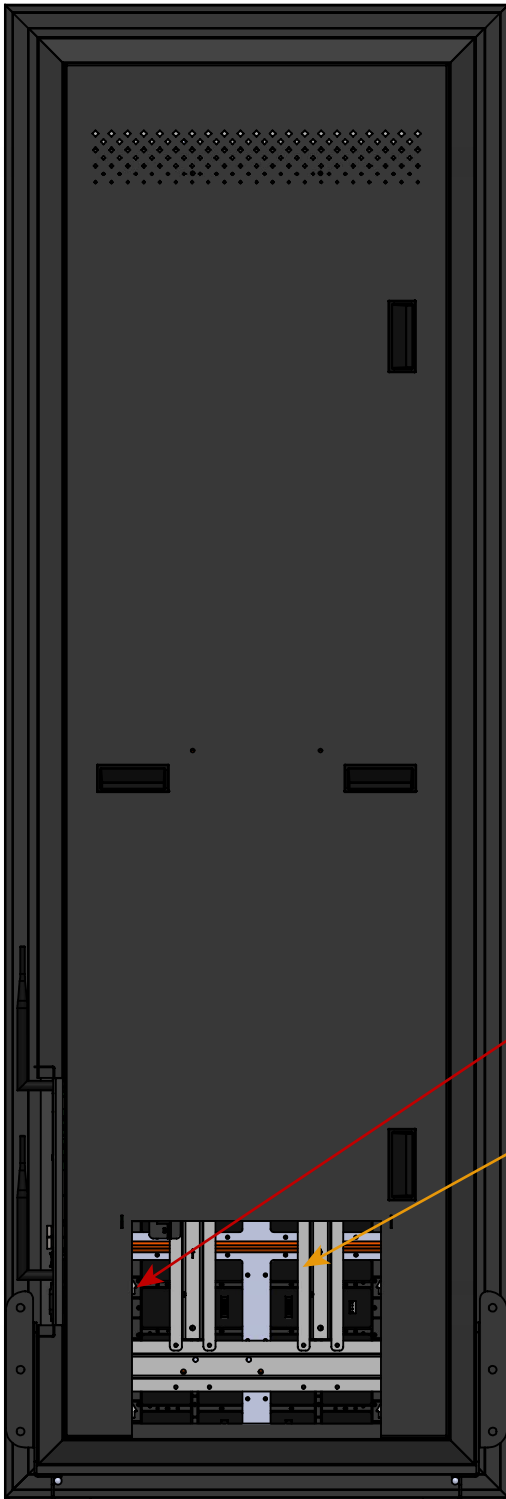
Installation



LEDUP

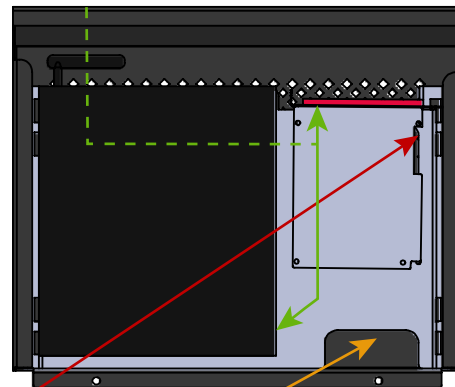
LEDECA[®]
ALWAYS BRIGHT!

Installation / Box Installation

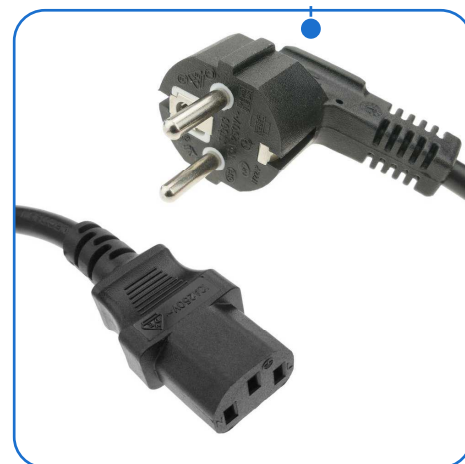


● Cat6 cable coming from Ledup will be connected to port 1 of Sender Card.

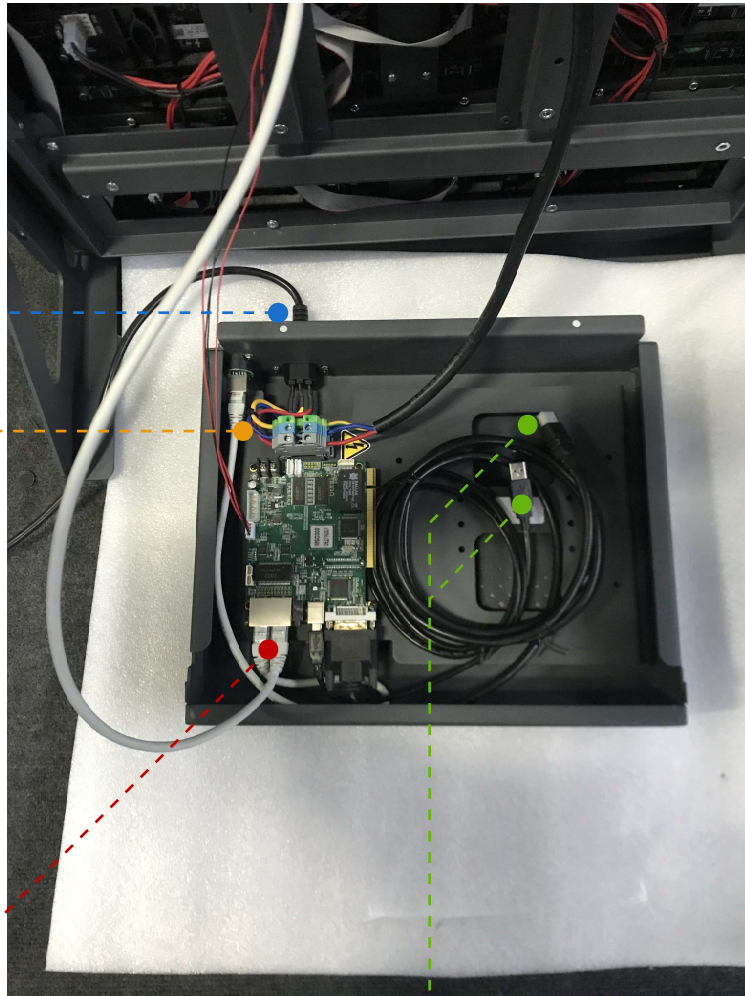
● Connect the HDMI and USB cable between the computer and the Sender card.



● Connect the Ledup Power cable to the input terminal



Installation / Box Installation



Connect the Ledup Power cable to the input terminal

Cat6 cable coming from Ledup will be connected to port 1 of Sender Card.

Connect the HDMI and USB cable between the computer and the Sender card.